

**SSI ABSOLUTE MULTITURN ENCODERS, SHU9 RANGE, ROBUSTECH™**

Especially designed for Heavy Duty Industry: steel and paper mills, lumber, cranes, etc.

Strong and compact design

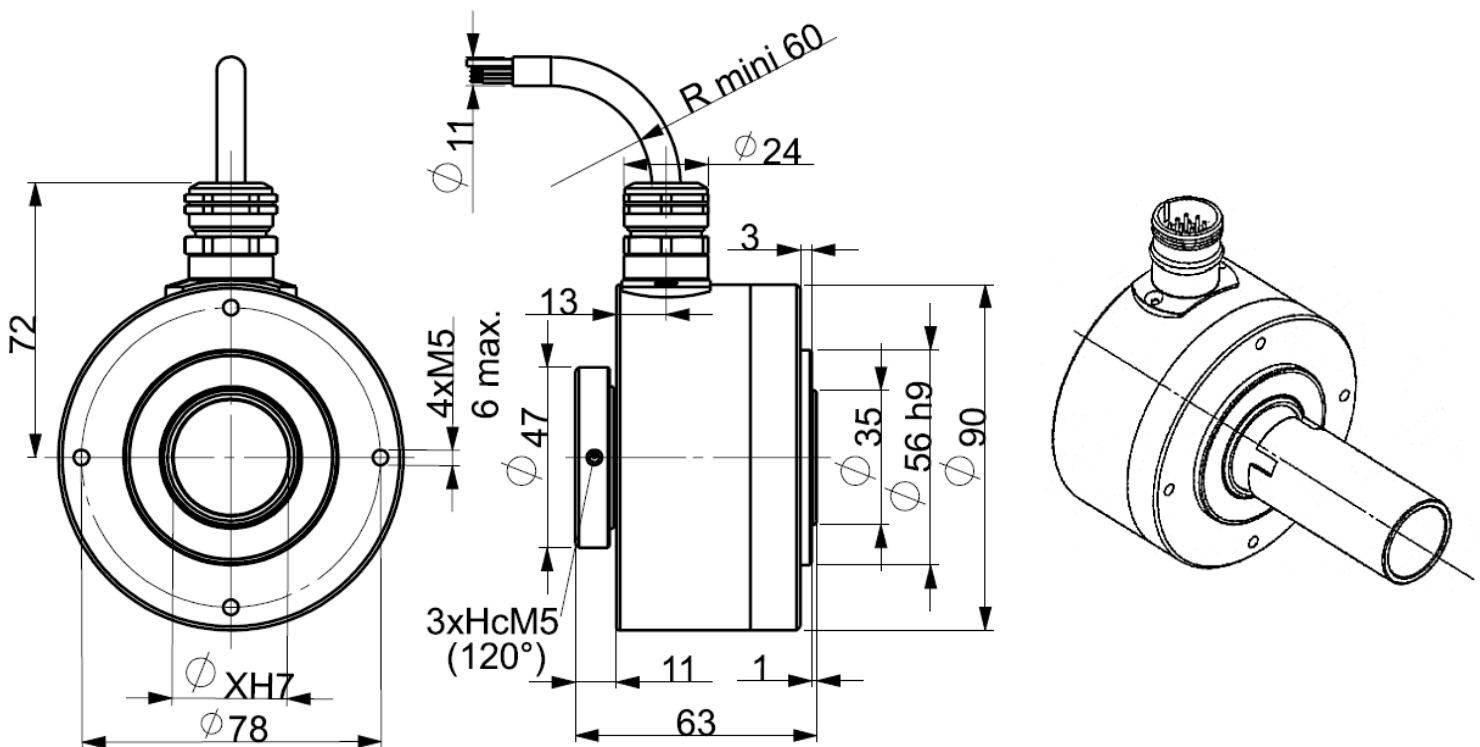
Excellent resistance to shocks/vibrations and to extreme axial/radial loads

Adaptation with aluminium reduction hubs or in PEEK composite

Possibility of double or triple mounting associating incremental, absolute and tachymetric functions



Also available inf ieldbus interface : DeviceNet, Profibus, CanOpen



**CHARACTERISTIC**

Material	Cover : zinc alloy	Vibration (EN60068-2-6)	≤ 100 m.s <sup>-2</sup> (10 ... 500 Hz)
Stainless steel option	Body: aluminium	EMC	EN 50081-1, EN 61000-6-2
Shaft	Stainless steel	Isolation	1 000 V eff
Bearings	6001 serie	Weight	900 g zinc alloy cover, alu body
Maximal load	Axial : 50 N		1050 g zinc alloy cover, stainless steel body
	Radial : 80 N		1200 g stainless steel cover and body
Shaft inertia moment	≤ 56.10 <sup>-6</sup> kg.m <sup>2</sup>	Operating temperature	- 10... + 75 °C (encoder T°)
Torque	≤ 25.10 <sup>-3</sup> N.m	Storage temperature	- 20... + 85 °C
Permissible max. speed	6 000 min <sup>-1</sup>	Protection(EN 60529)	IP 65
Continuous max. speed	3 600 min <sup>-1</sup>	Theoretical mechanical lifetime 10 <sup>9</sup> turns (F <sub>axial</sub> / F <sub>radial</sub> )	
Shaft seal	P.T.F.E	25 N / 40 N	50 N / 80 N
Shock (EN60068-2-27)	≤ 300 m.s <sup>-2</sup> (during 6 ms)	140	17

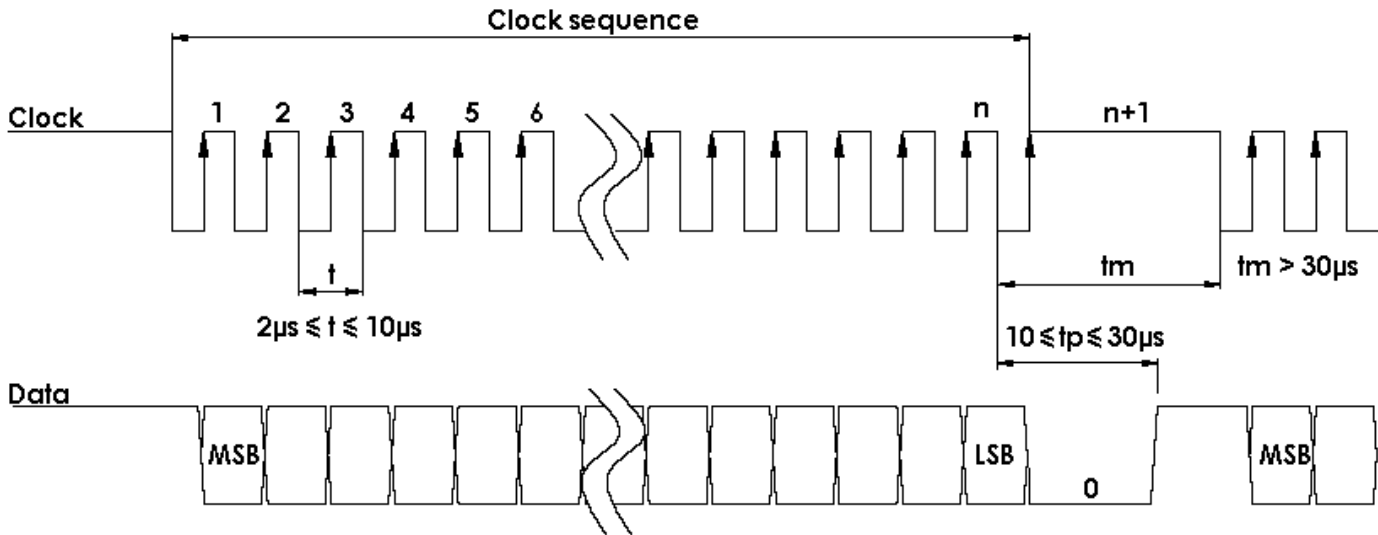
## SSI ASOLUTE MULTITURN ENCODERS, SHU9 RANGE, ROBUSTECH™

### ELECTRICAL CHARACTERISTIC

Input signal clock CLK	per opto-coupleur
Output signal DATA	line - driver selon RS422
Clock frequency CLK	100kHz – 500kHz
Precision	$\pm \frac{1}{2}$ LSB (13 bits)

Power supply	11 – 30Vdc
Introduction	< 4 s
Cons. without load	< 100mA

### SSI TRANSMISSION



Transmission	Transmission up to 400m at 100kHz in function of the cable characteristics
Cable	High security of transmission by using shielded cable and twisted pairs

### CONNECTIQUE SSI STANDARD

Type	Vcc	Gnd	Clk+	Data+	RAX	Data-	Clk-	SENS
S6	1	2	3	4	5	6	7	9
S7	BN Brown	WH White	GN Green	GY Grey	BU Blue	PK Pink	YE Yellow	RD Red
S8	8	1	3	2	6	10	11	5

Option : incremental channels available : 2048 ppr, 11 to 30Vdc or 5Vdc

### ORDERING REFERENCE (Special versions upon request, for ex. special flanges/electronics/connections...)

	Shaft Ø	Supply	Output stage	Code	Resolution / Nb of turns	Connection	Connection orientation
SHU9 Zinc cover Alu body	30:30mm	5 : 11 to 30Vdc	SS : SSI without parity	B : Binary  G : Gray	13B12D5 : resolution 13 bits, number of turns 12 bits	S6 : M23 12 pins CW for SSI S8 : M23 12 pins CCW for SSI	R : radial
SBU9 Zinc cover Stain. steel body	Shaft reduction hubs available		SP : SSI even parity		12B12D4 : resolution 12 bits, number of turns 12 bits	S7 : cable gland + SSI cable	Example : R020 : radial 2m cable
SXU9 Satin. Steel cover & body			SI : SSI odd parity				
SHU9	30 //	5	SS	G //	13B12D5 //	S7	R050