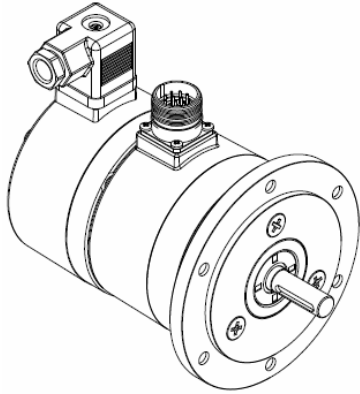


OVERSPEED SPEED SWITCH, GHM9 SERIES, ROBUSTECH™

The overspeed switch function on the **ROBUSTECH™** range – a sturdy mechanical security module without external power supply:

- radial commutation centrifugal switch without permanent contact
- high quality mechanics reliability
- excellent repeatability
- securised system, works without power supply
- modular mounting possibility
- commutation speed : standard calibration range between 800 and 4 000 rpm (rotation per minute)

Especially designed for heavy duty industry (steel and paper mills, lumber, cranes, engine etc...). Sturdy compact conception. Excellent resistance to shocks/vibrations and to extreme axial/radial loads
12mm or 11mm solid shaft with 115mm REO (Euroflange B10) for tacho-generator type mounting



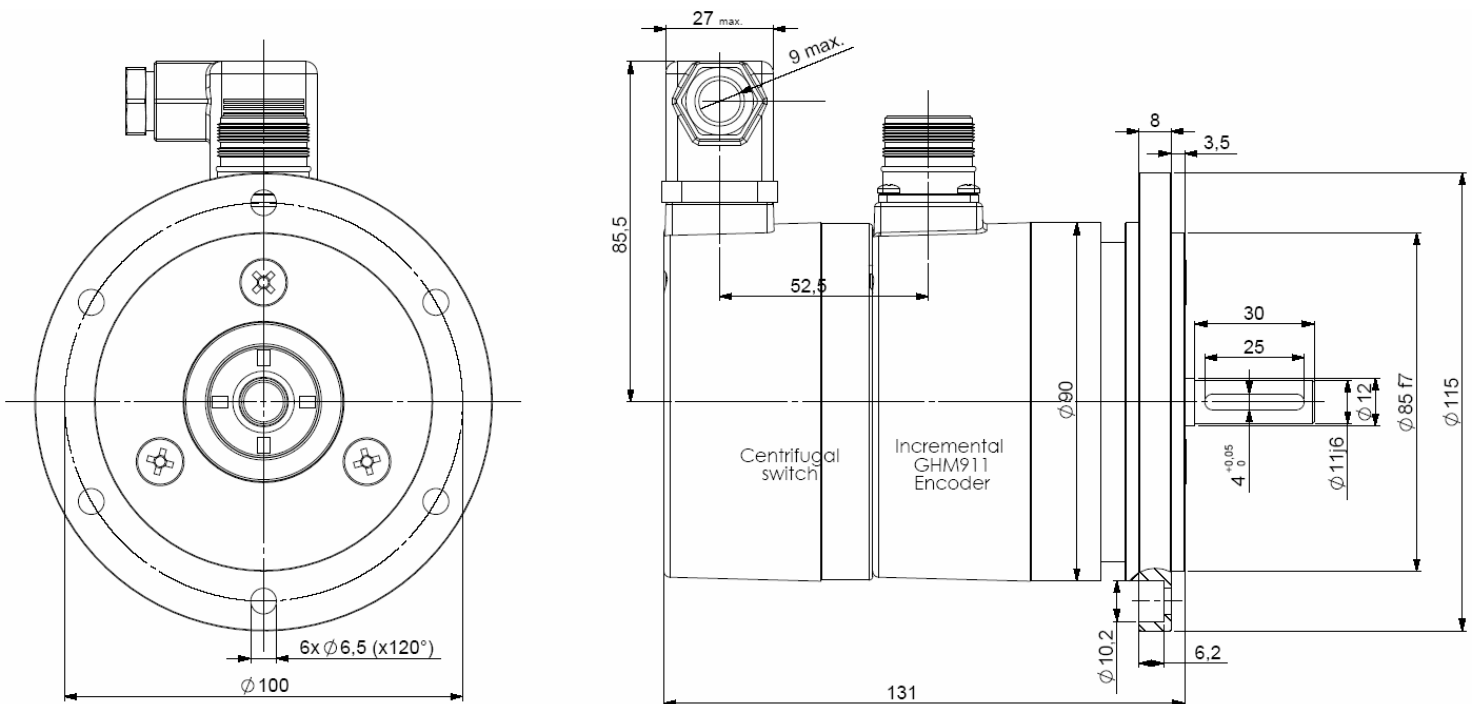
Solid shaft GHM9_11 with overspeed switch



Solid shaft GHM9_12 with overspeed switch

The compactness of the assembly, which can be proposed by BEI IDEACOD, allows the combination of overspeed switch and encoder presenting a particularly interesting cost / performances relation

EXAMPLE : INCREMENTAL ENCODER GHM9_11 WITH OVERSPEED SWITCH



CENTRIFUGAL SWITCH CHARACTERISTICS

Material	Cover : zinc alloy	Weight	1,10kg
	Body: aluminium	Operating temperature	-30 ... +130°C
Max. speed	1,5 . n _s	IP(EN 60529)	IP 67 (mounted)

OVERSPEED SPEED SWITCH, GHM9 SERIES, ROBUSTECH™

CHARACTERISTICS

Switching speed	800 ... 4 000 rpm
Principle	centrifugal
Mechanical life-time	500 000 cycles
Contact type	opened or closed

Max current	6 A / 240 Vac
Contact material	silver-cadmium
Maximum breaking sequence	4/min
Breaking accuracy	min ⁻¹ - 5% ... +8%

The commutation speed n_s is definitely calibrated in our factory

Right or left rotation direction

The switching speed n_s is defined for an acceleration = 100 s^{-2} (other, consult us)

Nota: $1 \text{ rad.s}^{-2} \leftrightarrow 9,55 \text{ rpm.s}^{-1}$

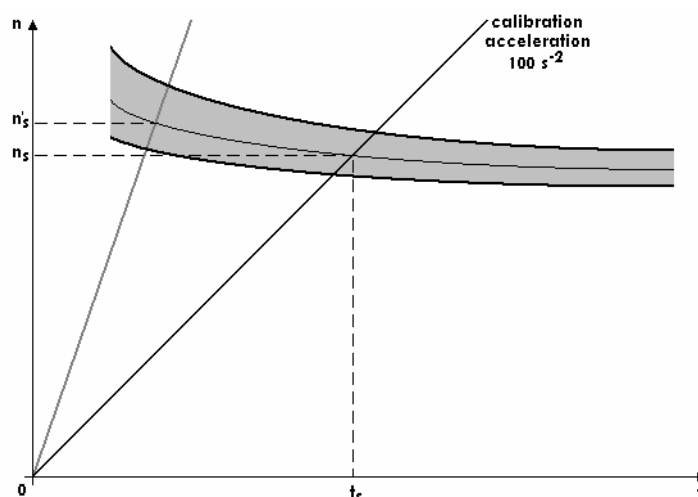
The hysteresis is about -3% in counter clockwise direction compared with clockwise direction

It is advised to choose the switching speed n_s in order that $n_s > 1,15.n_n$ (n_n : working speed, nominal speed)

The centrifugal relay must be used only in the case of an increasing speed

In decreasing speed, the centrifugal switch will open automatically at a slower speed of approximately 40% of the calibrated switching speed n_s

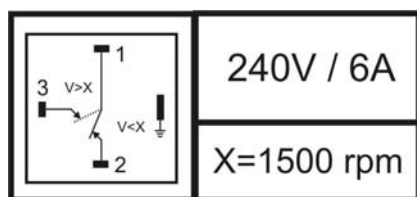
In the case of a higher acceleration than 100 s^{-2} , the switching speed will be higher (n 's, cf here-under drawing)



STANDARD CONNECTION

With 4 pinout solenoid valve connector

Contact 1 to 3 can be connected according to the desired configuration (rest, work or opposite)



The earth pin of the connector must be connected to the ground of the installation

AVAILABLE COMBINATION (Consult us for special version: ex: flange / connection / specific speed...)

Available combination

- incremental encoder + overspeed switch
- tacho-encoder + overspeed switch
- absolute encoder + overspeed switch
- incremental encoder + opto-tacho + overspeed switch
- overspeed switch + overspeed switch ...

Standard speeds (rpm) : 1 000, 1 200, 1 500, 1 800, 3 000 (consult us for other speed)

Reference: consult us

Note : The switch commutation speed is calibrated in our factory, no correction and no later modification is possible

Made in France